



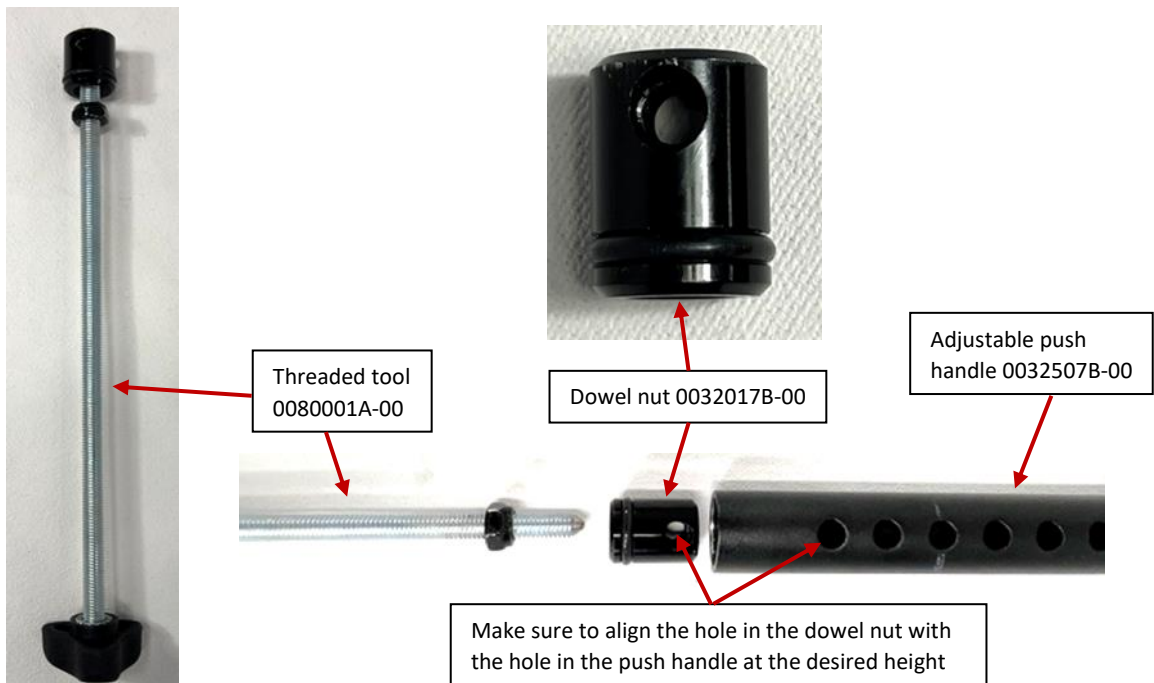
# INSTRUCTION SHEET

## INSTALLING HEIGHT ADJUSTABLE HANDLES WITH THREADED TOOL

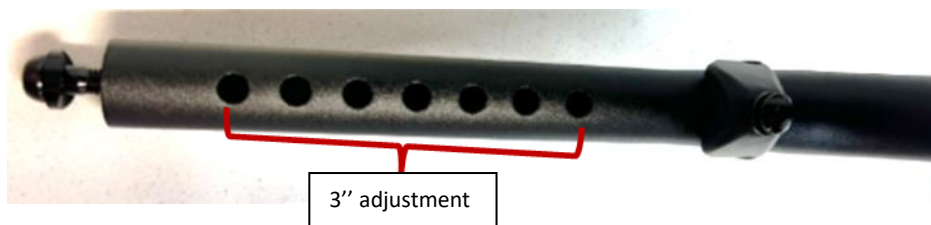
- i** Before beginning assembly, make sure you have all the necessary parts. These parts must be ordered through your representative or through the Moton Composites customer service. Make sure to have the serial number of your wheelchair to make ordering easier.

Material(s) required:	Tool(s) required:
<ul style="list-style-type: none"><li>9001285 &amp; 9002915-STANDARD &amp; HD PUSH HANDLES-ADJUSTABLE</li></ul>	<ul style="list-style-type: none"><li>9001643A-00-TOOL KIT</li><li>0080001A-00-THREADED TOOL</li><li>5mm Allen key</li><li>7Nm torque wrench</li></ul>

- The threaded tool (0080001A-00) is used only to insert the push handle sleeve into the back cane.



- The adjustable push handle can adjust 3". Each hole is 1/2" apart.





# INSTRUCTION SHEET

## INSTALLING HEIGHT ADJUSTABLE HANDLES WITH THREADED TOOL

### INSTALLATION

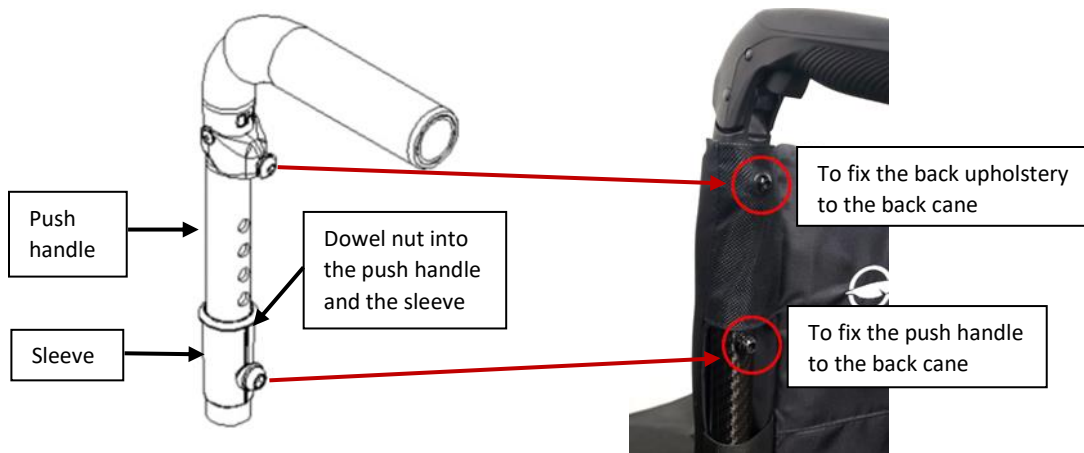
1. Insert the adjustable handle **into** the sleeve (0032017B-00) by aligning the holes.



2. Insert the dowel nut **into** the push handle with the threaded tool.



3. Align together, at the desired height for the handle, the dowel nut, the sleeve and the push handle.



4. Screw the dowel nut with the sleeve and the push handle with a 5mm Allen key.
5. Finalize with the **7Nm** adjusted torque wrench.
6. Repeat steps 1 to 5 for the second push handle.